

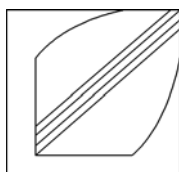
Stefan Olof Lundgren
Op. 26

Libretto
Frank Legl

ALBUS

Kammeroper
Füssener Fassung

Violine II



© Lundgren Edition
Alle Rechte vorbehalten

Violin II

Prolog (1)

♩ = 90 Moderato



55

59

63

67

71

76

80

84

89

94

97

Violin II

Entrée (2)

Musik: Weiß/Bach

♩ = 60

First musical staff, measures 1-5. The key signature has three sharps (F#, C#, G#) and the time signature is 4/4. The music begins with a quarter note G4, followed by eighth notes A4-B4, quarter notes C5-B4, and quarter notes A4-G4. The piece concludes with a quarter rest.

Second musical staff, measures 6-10. Measures 6-7 contain quarter notes G4, A4, B4, and C5. Measures 8-10 feature eighth-note patterns: G4-A4-B4, A4-B4-C5, and B4-A4-G4.

Third musical staff, measures 11-15. Measures 11-12 consist of eighth-note runs: G4-A4-B4-C5 and B4-A4-G4. Measures 13-15 continue with eighth-note patterns: A4-B4-C5, B4-A4-G4, and quarter notes G4, A4, B4.

Fourth musical staff, measures 16-19. Measures 16-17 show eighth-note runs: G4-A4-B4-C5 and B4-A4-G4. Measures 18-19 feature eighth-note patterns: A4-B4-C5, B4-A4-G4, and quarter notes G4, A4, B4.

Fifth musical staff, measures 20-24. Measures 20-21 contain eighth-note runs: G4-A4-B4-C5 and B4-A4-G4. Measures 22-24 feature eighth-note patterns: A4-B4-C5, B4-A4-G4, and quarter notes G4, A4, B4.

Sixth musical staff, measures 25-28. Measures 25-26 consist of eighth-note runs: G4-A4-B4-C5 and B4-A4-G4. Measures 27-28 feature eighth-note patterns: A4-B4-C5, B4-A4-G4, and quarter notes G4, A4, B4.

Seventh musical staff, measures 29-32. Measures 29-30 contain eighth-note runs: G4-A4-B4-C5 and B4-A4-G4. Measures 31-32 feature eighth-note patterns: A4-B4-C5, B4-A4-G4, and quarter notes G4, A4, B4.

Eighth musical staff, measures 33-36. Measures 33-34 consist of eighth-note runs: G4-A4-B4-C5 and B4-A4-G4. Measures 35-36 feature eighth-note patterns: A4-B4-C5, B4-A4-G4, and quarter notes G4, A4, B4.

Ninth musical staff, measures 37-41. Measures 37-38 contain eighth-note runs: G4-A4-B4-C5 and B4-A4-G4. Measures 39-41 feature eighth-note patterns: A4-B4-C5, B4-A4-G4, and quarter notes G4, A4, B4.

Tenth musical staff, measures 42-44. Measures 42-43 consist of eighth-note runs: G4-A4-B4-C5 and B4-A4-G4. Measures 44 features eighth-note patterns: A4-B4-C5, B4-A4-G4, and quarter notes G4, A4, B4.

Eleventh musical staff, measures 45-48. Measures 45-46 contain eighth-note runs: G4-A4-B4-C5 and B4-A4-G4. Measures 47-48 feature eighth-note patterns: A4-B4-C5, B4-A4-G4, and quarter notes G4, A4, B4.

Violin II

Der Schrei (3)

♩ = 100

9

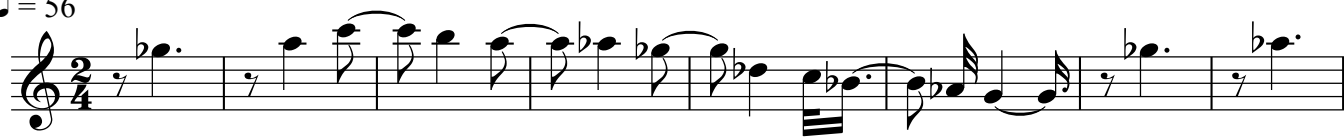
13

17

Violin II

Au (4)

$\text{♩} = 56$



Violin II

♩ = 60

13 3 5 2

25 ♩ = 30 ♩ = 60 ♩ = 50 pizz. ♩ = 40

3/4

Violin II

Ihr auch (6)

$\text{♩} = 60$ *pizz.*

8

15

22

29

36

43

50

57

64

71

77

Violin II

Ja, die Musik (7)

$\text{♩} = 75$ pizz

5

9

13

17

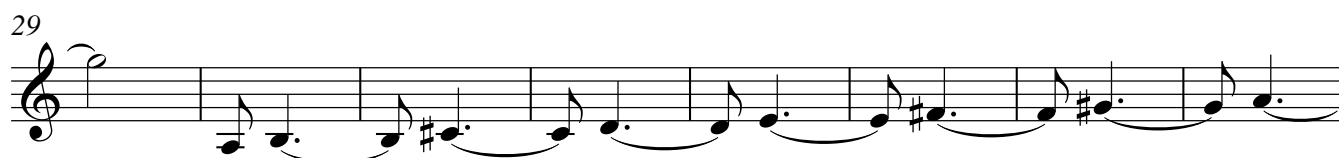
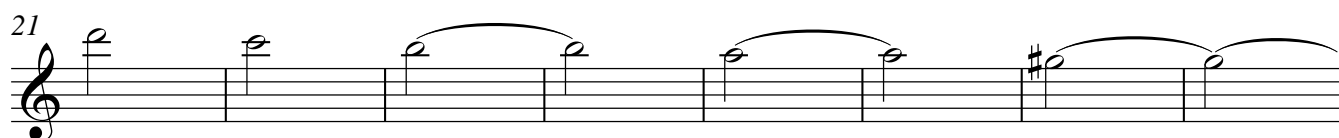
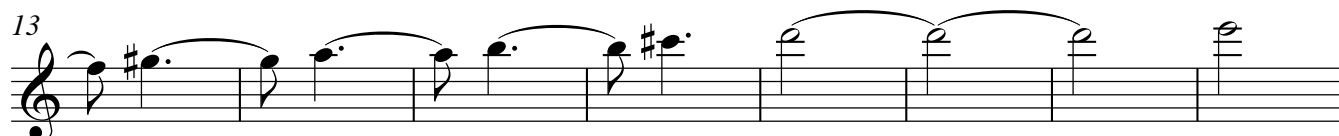
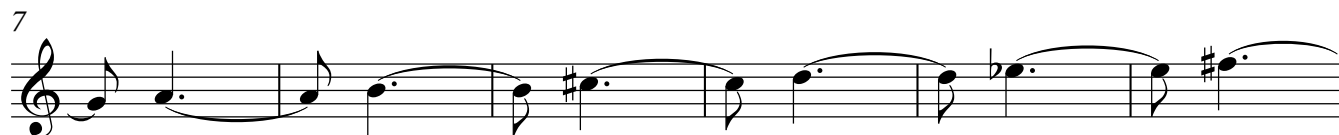
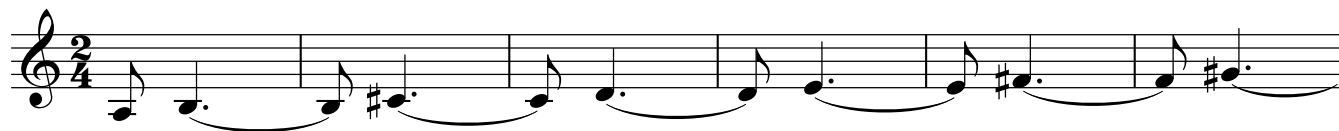
21 $\text{♩} = 60$ 2

25 $\text{♩} = 50$ 4 arco

Violin II

Präludium Nr. 1 (8)

♩ = 80



Violin II

"Meister" (9)

♩ = 40 ♩ = 50

6

Violin II

Interludium (10)

A

Musical staff A, measures 1-4. Time signatures: 6/16, 9/16, 4/8.

B

Musical staff B, measures 5-9. Time signatures: 9/16, 6/16, 2/8, 3/16, 2/8.

C

Musical staff C, measures 10-15. Time signatures: 9/16, 6/16, 2/8, 3/16, 2/8, 6/16.

D

E

Musical staff E, measures 16-22. Time signatures: 2/8, 9/16, 2/8, 3/16, 2/8, 6/16.

F

Musical staff F, measures 23-28. Time signatures: 9/16, 2/8, 6/16, 2/8, 3/16, 2/8.

G

Musical staff G, measures 29-33. Time signatures: 9/16, 6/16, 4/8, 3/16.

H

Musical staff H, measures 34-39. Time signatures: 9/16, 6/16, 4/8, 3/16, 2/8.

I

J

Musical staff J, measures 40-44. Time signatures: 9/16, 2/8, 6/16, 9/16.

K

Musical staff K, measures 45-50. Time signatures: 4/8, 9/16, 6/16, 2/8, 3/16, 2/8.

L

Musical staff L, measures 51-55. Time signatures: 9/16, 6/16, 2/8, 3/16, 2/8.

M

Musical staff M, measures 56-60. Time signatures: 9/16, 4/8, 9/16, 4/8.

Violin II

Nicht so kratzen (11)

4 56

60

65

69

74

79

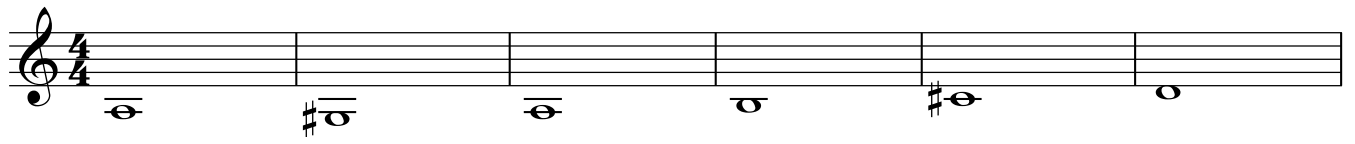
85

89 pizz.

Violin II

Präludium Nr. 2 (12)

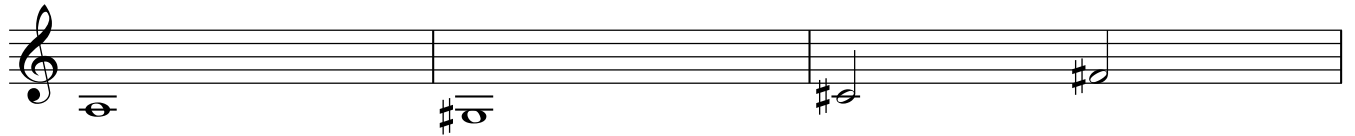
♩ = 70



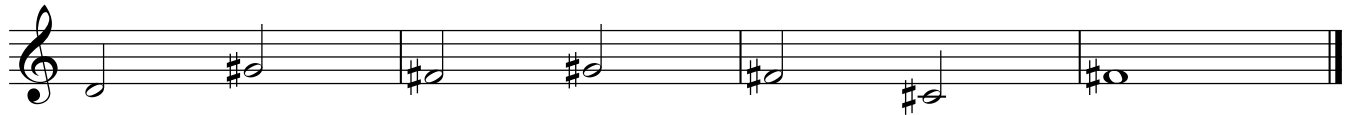
7



13



16



Violin II

Veracini (13)

♩ = 70

f

3

5

7

9

11

13

15

17

19

21

23

25

Immer spielen (14)

Veracini

f Das sagt Ihr. Man könnt, man könnt

8

könnt es durch-aus an-ders se-hen: Ihr seid nicht län-ger Knecht der,

14

Knecht der Lau-te, die Euch, Euch zwingt. Ich da-ge-gen,

19

ich muß, im-mer im-mer, spie-len, im-mer, ich muß im-mer spie-len

25

im-mer spie-len, im-mer, ich muß im-mer

30

spie-len, im-mer, ich muß im-mer, spie-len, spie-len, im-mer im-mer

36

spie-len! spie-len! Ich hal-te das nicht län-ger, nicht län-ger aus!

42

Nicht län-ger,

45

nicht mehr län-ger aus!

Violin II

Der Sturz (15)

♩ = 80

arp.

9

17

23

30

36

Violin II

Der Schrei (16)

♩ = 100

9

13

17

Violin II

Ein Bote bracht' (17)

5

8

11

14

17

21

24

27

30

33

35

p

rit. pizz.

Violin II

Ein Brief (18)

♩ = 100

10/8

3

5

7

9

11

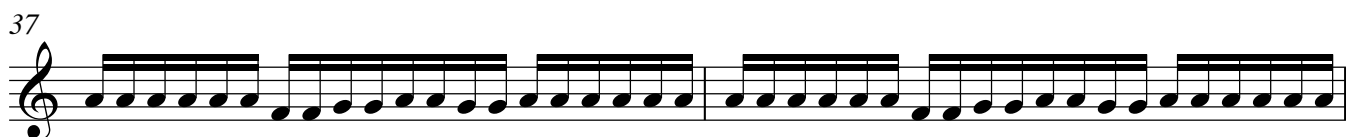
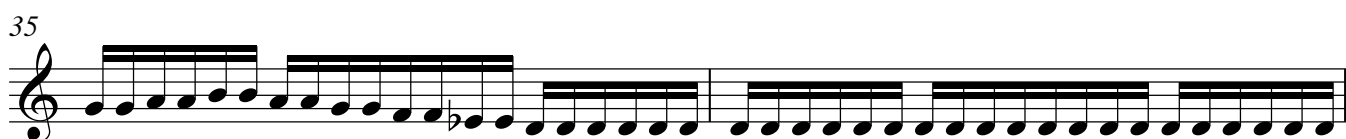
13

15

17

19

21



Violin II

Was ist? (19)

♩ = 120

4

6

11

15

18

20

Violin II

Man hört (20)

20 *tr* 11

38

45

52 *tr* 11

88

95

99

Violin II

Präludium Nr. 3 (21)

♩ = 40

First staff of music, starting with a whole rest followed by a series of eighth notes.

Second staff of music, eighth notes with a sharp sign.

4

Third staff of music, eighth notes with a sharp sign.

5

Fourth staff of music, eighth notes with a sharp sign.

7

Fifth staff of music, eighth notes with a sharp sign.

9

Sixth staff of music, eighth notes with a sharp sign.

11

Seventh staff of music, eighth notes with a sharp sign.

12

Eighth staff of music, eighth notes with a sharp sign.

13

Ninth staff of music, eighth notes with a sharp sign.

14

Tenth staff of music, eighth notes with a sharp sign.

15

Eleventh staff of music, eighth notes with a sharp sign, ending with a double bar line.

Violin II

Besuch für Euch (22)

♩ = 80

1

5

9

14

Violin II

Ich schaute (23)

pizz.
f

4

8

11

Violin II

Nicht nur dieses (24)

♩ = 60

arco

p

5

8

Violin II

Rondeau (25)

Musik: Weiss/Bach

♩ = 120

1 *p*

8

15

22

29

37

43

50

57

64

70

77

Violin II

Euch kann ich's sagen (27)

♩ = 60
pizz

♩ = 60
arco

8

♩ = 80
pizz.

♩ = 70

13 **Adagio**

♩ = 70

Violin II

Präludium Nr. 4 (28)

♩. = 60

4

6

8

10

12

14

17

20

22

rit.

Violin II

Meister Hoffmann (29)

♩. = 90

3

7

10

13

16

19

22

25

Violin II

Es scheint (30)

$\text{♩} = 60$

4

8

12

tr

tr

tr

tr

7

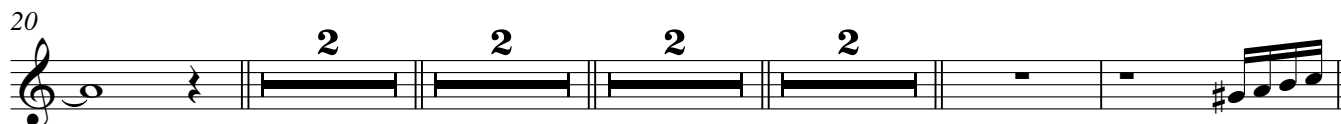
3

3

Violin II

Das trifft (31)

♩ = 60



Violin II

Und wenn (32)

$\text{♩} = 50$

pizz.

5 arco

10

13 rit. pizz.

Violin II

Ob er (33)

$\text{♩} = 90$
pizz.

p *f* *p*

5

10

15

20

Präludium Nr. 5 (34)

♩ = 80

6

2

3

5

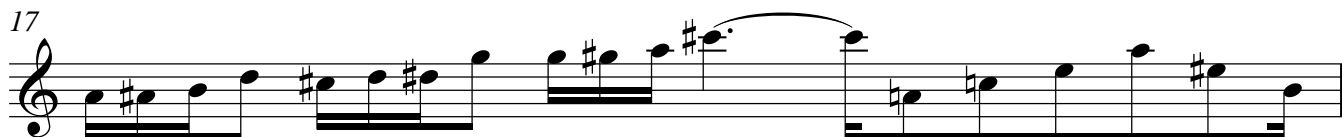
7

8

9

11

13



Violine II

25

26

27

28

29

30

31

32

Was wird aus mir? (35)

♩ = 56

1

3

5

8

10

12

14

16

18

20

Violine II

Interludium (36)

$\text{♩} = 60$

f

Detailed description: This staff contains the first line of music. It begins with a treble clef and a 2/4 time signature. The first measure is a 6-measure rest, with a '6' above it. The second measure is a half note in 6/4 time, marked with a forte 'f' dynamic. The third measure is a half note in 4/4 time with a sharp sign. The fourth measure is a half note in 6/4 time. The fifth measure is a half note in 4/4 time with a sharp sign. The sixth measure is a half note in 2/4 time. The seventh measure is a 4-measure rest, with a '4' above it. The eighth measure is a half note in 4/4 time.

16

Detailed description: This staff contains the second line of music, starting at measure 16. It begins with a treble clef and a 4/4 time signature. The first measure is a quarter note with a sharp sign. The second measure is a half note with a sharp sign. The third measure is a quarter note with a sharp sign. The fourth measure is a half note with a sharp sign. The fifth measure is a 2/4 time signature change, followed by a half note. The sixth measure is a half note. The seventh measure is a half note. The eighth measure is a half note. The ninth measure is a 4/4 time signature change, followed by a quarter note with a sharp sign. The piece ends with a double bar line.

Violine II

Ein Bote (37)

$\text{♩} = 40$

Measures 1-4: Treble clef, 2/4 time signature, starting with a quarter rest. Measure 1 has a quarter note G4. Measure 2 has quarter notes A4, G4, F4. Measure 3 has quarter notes E4, D4, C4. Measure 4 has quarter notes B3, A3, G3.

4

Measures 5-8: Treble clef, 4/4 time signature, starting with a quarter rest. Measure 5 has quarter notes G4, A4, B4. Measure 6 has quarter notes C5, B4, A4. Measure 7 has quarter notes G4, F4, E4. Measure 8 has quarter notes D4, C4, B3.

8

Measures 9-12: Treble clef, 4/4 time signature, starting with a quarter rest. Measure 9 has quarter notes A4, G4, F4. Measure 10 has quarter notes E4, D4, C4. Measure 11 has quarter notes B3, A3, G3. Measure 12 has quarter notes F3, E3, D3.

12

$\text{♩} = 120$ pizz.

Measures 13-17: Treble clef, 3/4 time signature. Measure 13 starts with a quarter rest. Measure 14 has quarter notes G4, A4. Measure 15 has quarter notes B4, A4. Measure 16 has quarter notes G4, F4. Measure 17 has quarter notes E4, D4.

18

arco *ff* tr~

Measures 18-20: Treble clef, 4/4 time signature. Measure 18 has quarter notes G4, A4. Measure 19 has quarter notes B4, A4. Measure 20 has quarter notes G4, F4. This is followed by a double bar line.

Violine II

Albus triumphabit (38)

$\text{♩} = 100$

6

6

11

15

6

25

$\text{♩} = 60$

3

30

33

36

38

Violine II

Albus triumphabit (38)

♩ = 100

6

6

11

15

6

25

♩ = 60

3

30

33

36

38