

12 studies for lute op. 19 by stefan lundgren



12 studies for lute op.19

by
Stefan Lundgren

study no. 1	1
study no. 2	3
study no. 3	4
study no. 4	7
study no. 5	8
study no. 6	10
study no. 7	11
study no. 8	12
study no. 9	15
study no. 10	16
study no. 11	18
study no. 12	21
greensleeves	22

12 Studies for Lute by Stefan Lundgren Op. 19

1.

Handwritten musical notation for the first study, consisting of seven staves. The first staff begins with a treble clef and a 4/4 time signature. The notation includes various notes, rests, and accidentals (sharps, flats, naturals) with stems and beams. Some notes are marked with 'p' for piano. The piece concludes with a double bar line on the seventh staff.

Tuning: $\text{f} \text{f} \text{e} \text{f} \text{f} \text{a}$

2.

5/8 *e* *b* | *e* *r* *a* | *a* *b* *b* *b* *b* | *ba* | *b* *b* *a* *e*

b *r* *e* *a* | *e* *a* *a* *e* | *e* *b* *a* *b* *b* *b* | *e* *r* *a* *a* | *a* *b* *r* *a* *b* *b*

ba *a* | *b* *a* *b* *b* *a* *e* | *b* *r* *a* *v* *e* *a* | *e* *r* *a* *e* | *e* *a* *e* *a*

b *r* *a* | *a* *e* *a* | *e* *a* *e* *b* *a* *a* | *e* *a* *b* *a* *e*

a *b* *b* | *e* *a* *e* *a* | *b* *r* *a* *v* *e* *a* | *a* *e* *a* *e* *a* | *a* *b* *e* *a*

a *b* *a* *a* | *a* *b* *a* *b* *b* *a* | *a* *b* *a* *b* *b* *a* | *e* *a* *e* *a* | *a* *b*

a *a* *e* | *a* *b* *a* *e* | *e* *b* *a* *a* | *b* *e* *a* *e* *a* | *a* *e* *a* *e*

e *b* *a* *b* *b* *a* | *a* *b* *a* *b* *b* *a* | *a* *e* *b* *a* *e* | *a* *b* *a* *e* *a* | *b* *a* *e* *a*

a *b* *a* *b* *a* | *a* *b* *a* *b* *e* *a* | *a* *b* *a* *e* *a* | *a* *b* *a* *e* *a*

3.

Handwritten musical notation on a five-line staff. The time signature is 3/4. The melody consists of eighth notes with stems pointing up and down, alternating between two notes. The bass line consists of quarter notes with stems pointing up and down, alternating between two notes.

Handwritten musical notation on a five-line staff. The melody consists of eighth notes with stems pointing up and down, alternating between two notes. The bass line consists of quarter notes with stems pointing up and down, alternating between two notes.

Handwritten musical notation on a five-line staff. The time signature is 3/4. The melody consists of eighth notes with stems pointing up and down, alternating between two notes. The bass line consists of quarter notes with stems pointing up and down, alternating between two notes.

Handwritten musical notation on a five-line staff. The melody consists of eighth notes with stems pointing up and down, alternating between two notes. The bass line consists of quarter notes with stems pointing up and down, alternating between two notes.

Handwritten musical notation on a five-line staff. The melody consists of eighth notes with stems pointing up and down, alternating between two notes. The bass line consists of quarter notes with stems pointing up and down, alternating between two notes.

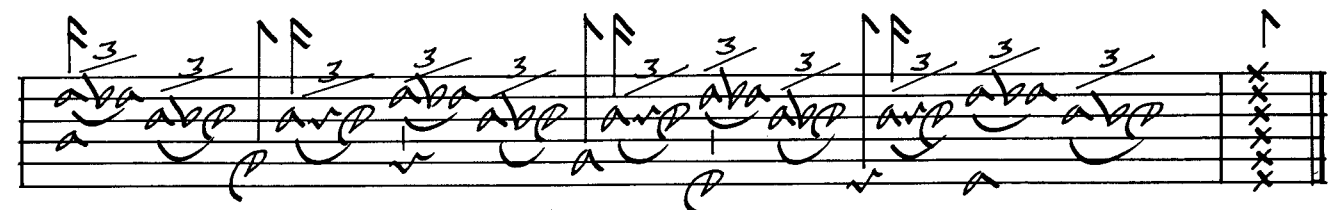
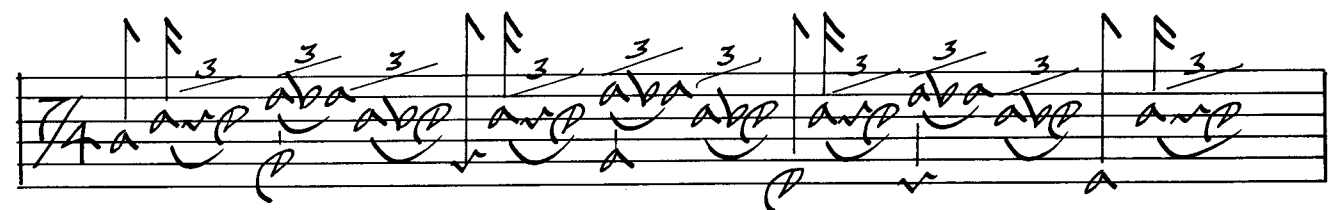
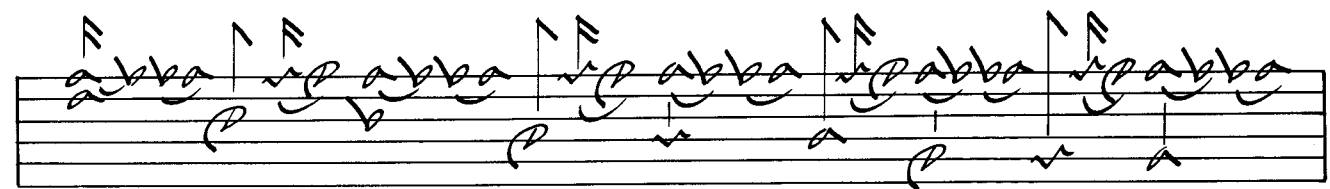
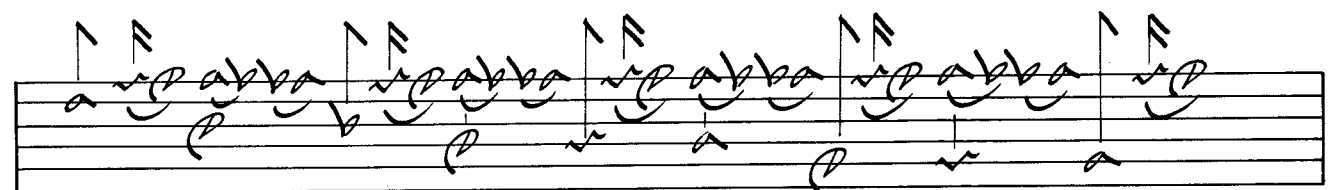
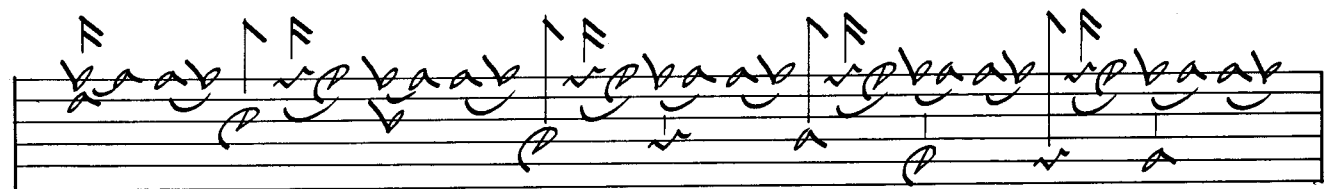
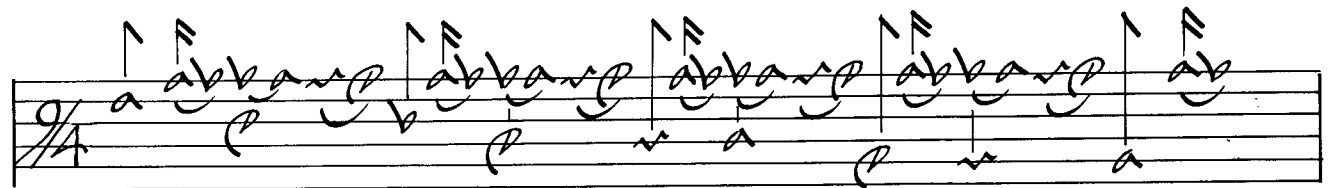
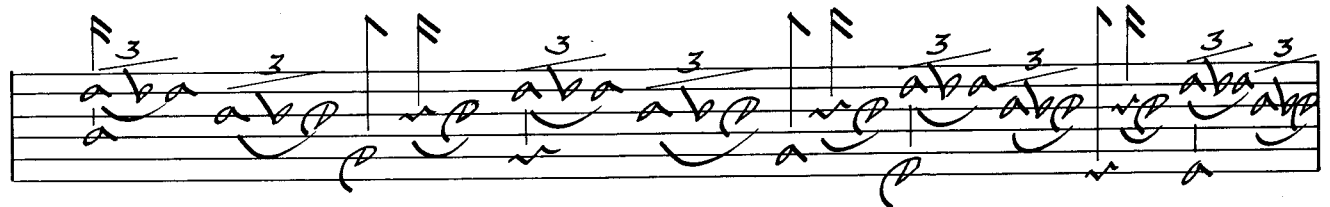
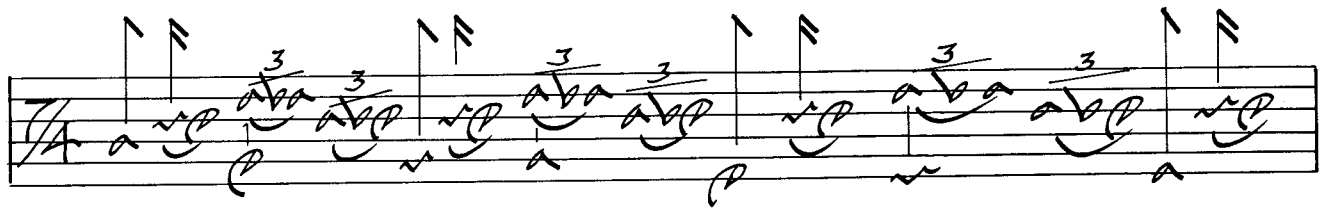
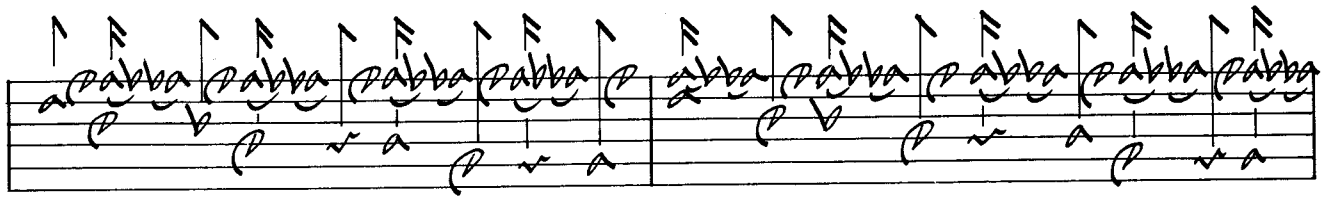
Handwritten musical notation on a five-line staff. The time signature is 3/4. The melody consists of eighth notes with stems pointing up and down, alternating between two notes. The bass line consists of quarter notes with stems pointing up and down, alternating between two notes.

Handwritten musical notation on a five-line staff. The melody consists of eighth notes with stems pointing up and down, alternating between two notes. The bass line consists of quarter notes with stems pointing up and down, alternating between two notes.

Handwritten musical notation on a five-line staff. The time signature is 3/4. The melody consists of eighth notes with stems pointing up and down, alternating between two notes. The bass line consists of quarter notes with stems pointing up and down, alternating between two notes.

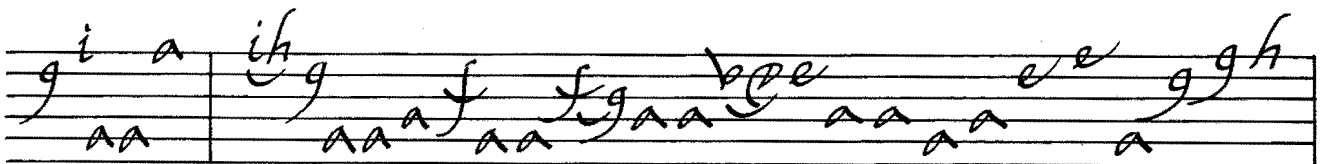
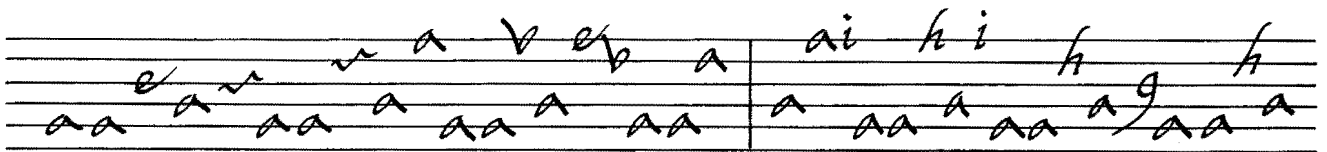
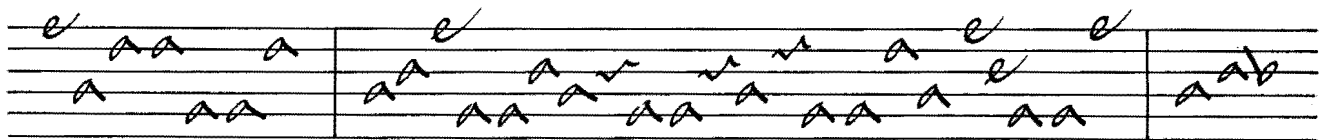
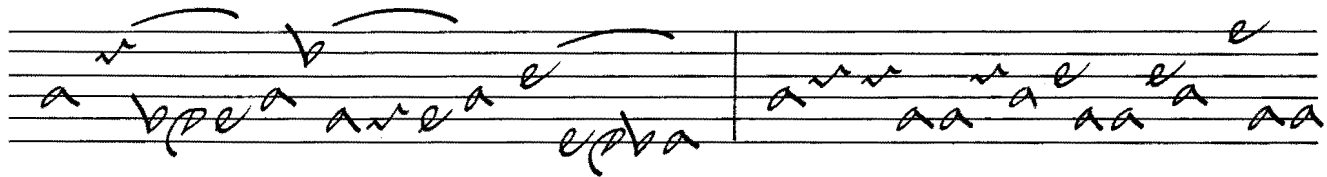
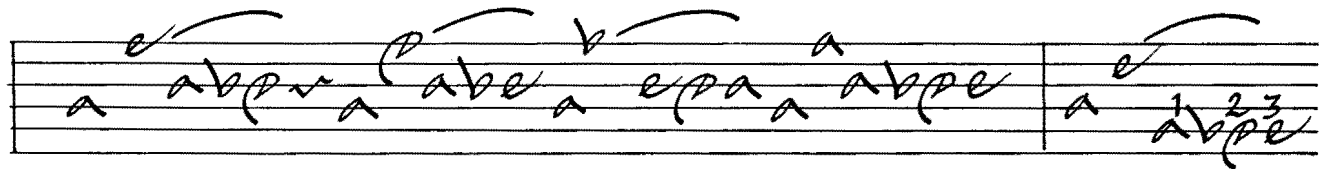
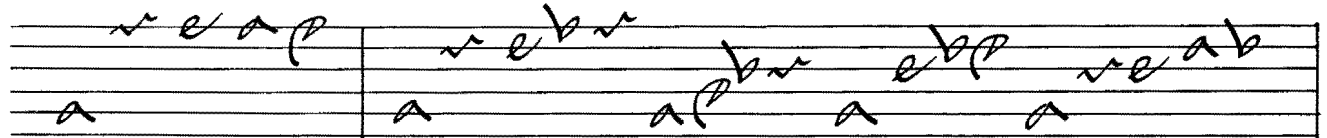
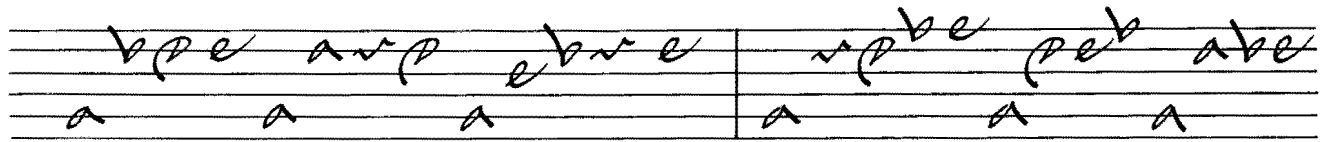
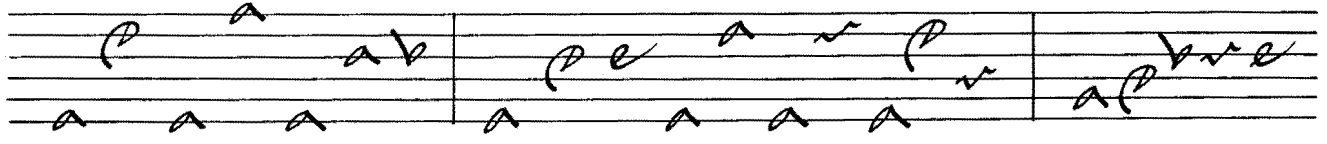
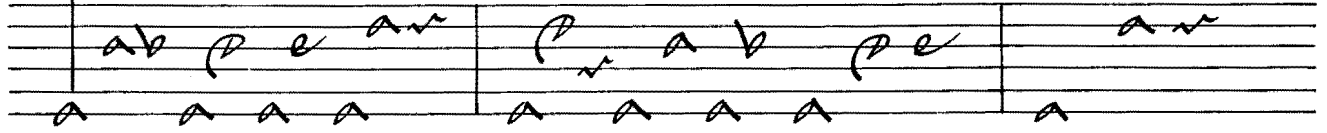
Handwritten musical notation on a five-line staff. The time signature is 3/4. The melody consists of eighth notes with stems pointing up and down, alternating between two notes. The bass line consists of quarter notes with stems pointing up and down, alternating between two notes.

4



4.

5.



gh k aa a h gh aa hge aa a ff ik ii°°°°° 2k

aa ik aa hkl aa a gg kkl aabbpppeebvvee aabb

pppeebvvee aavvppp aabbp aavvppp aabbppp e aavv

ppvvveea aavvppp aabbp vvvveeaavv vvvvvvvvvv

evve'fhi h'ffaa'ffhh aabea'p'vva'eebbaabb

a veav'p'fg' eevvppaa evvppaa p'paa p'paa p'paa aabbvvee aabbvvee

a v'p' a v' p' a ab p' e a v' v'p'v' p'v' a v'v'

v'v'p' v'v' v'v' e e aa a ai ki a aa a

h g h gi a ii°°°°° aa a aa a aa

6.

7/4

7. $\frac{7}{8}$ hg aap aaaaa a aa k | hg aa a aaaaa p aa a
hg p a k | hg a p a

ve aa h aaaaa g aa e | vr aa f aaaaa i aa h
ve h g e | vr f i h

fe aa u aaaaa p aa a bk aaa aaaa
fe r p a bk a $\frac{3}{a}$ $\frac{3}{a}$ $\frac{3}{a}$ $\frac{3}{a}$

ve aa f aaaaa h aa i he aa p aaaaa aa a
ve f h i he p aa a

pe aa $\frac{3}{a}$ $\frac{3}{a}$ $\frac{3}{a}$ $\frac{3}{a}$ $\frac{3}{a}$ $\frac{3}{a}$ aa e ab aab aaaa b a b
pe $\frac{3}{a}$ $\frac{3}{a}$ $\frac{3}{a}$ $\frac{3}{a}$ $\frac{3}{a}$ $\frac{3}{a}$ e e ab b b b b

ab a a a a e g ki a k aaaaa g aa h
ab a a e g ki k g h

ai a a b a a a a a a a i g
a b a a a a a a i g

he a a a $\frac{3}{a}$ $\frac{3}{a}$ $\frac{3}{a}$ $\frac{3}{a}$ $\frac{3}{a}$ $\frac{3}{a}$ ab $\frac{3}{a}$ $\frac{3}{a}$ $\frac{3}{a}$ $\frac{3}{a}$
he a a a a a a a a a a a a

Empty musical staves.

Handwritten musical notation on a five-line staff. The notes are a, b, and natural notes, some with slurs and accents. The sequence is a b, a b, a b, a b, a b, a b, a b, a b, a b, a b, a b. There are also some rhythmic markings below the staff.

Handwritten musical notation on a five-line staff. The notes are a, b, and natural notes, some with slurs and accents. The sequence is a b, a b, a b, a b, a b, a b, a b, a b, a b, a b, a b. There are also some rhythmic markings below the staff.

Handwritten musical notation on a five-line staff. The notes are a, b, and natural notes, some with slurs and accents. The sequence is a b, a b, a b, a b, a b, a b, a b, a b, a b, a b, a b. There are also some rhythmic markings below the staff.

Handwritten musical notation on a five-line staff. The notes are a, b, and natural notes, some with slurs and accents. The sequence is a b, a b, a b, a b, a b, a b, a b, a b, a b, a b, a b. There are also some rhythmic markings below the staff.

Handwritten musical notation on a five-line staff. The notes are a, b, and natural notes, some with slurs and accents. The sequence is a b, a b, a b, a b, a b, a b, a b, a b, a b, a b, a b. There are also some rhythmic markings below the staff.

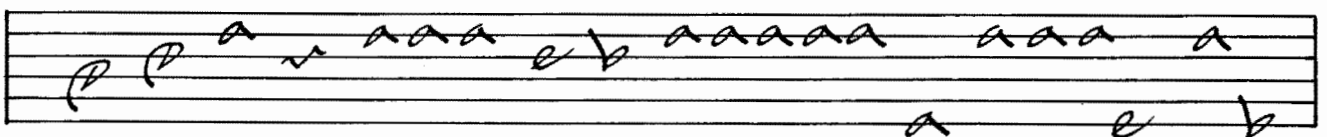
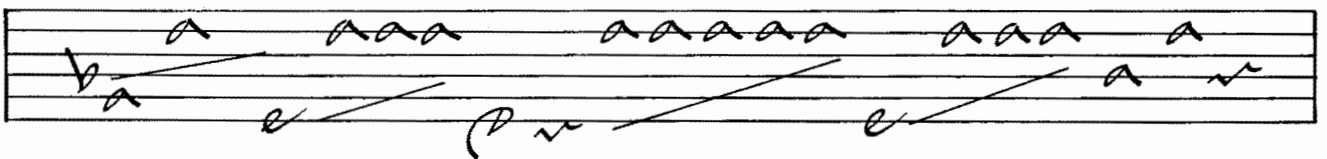
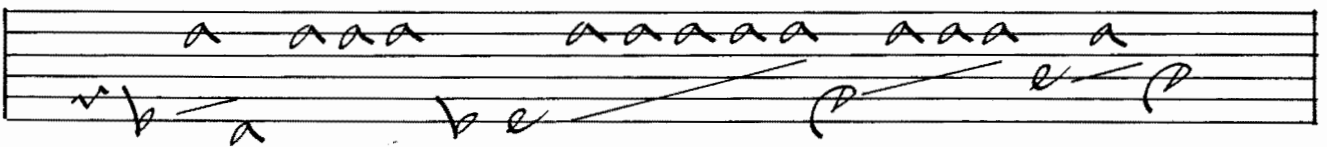
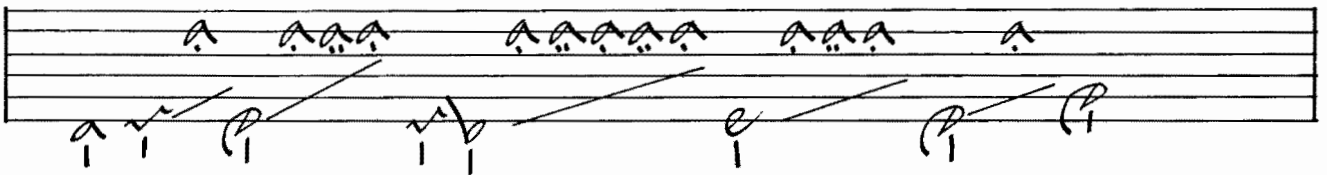
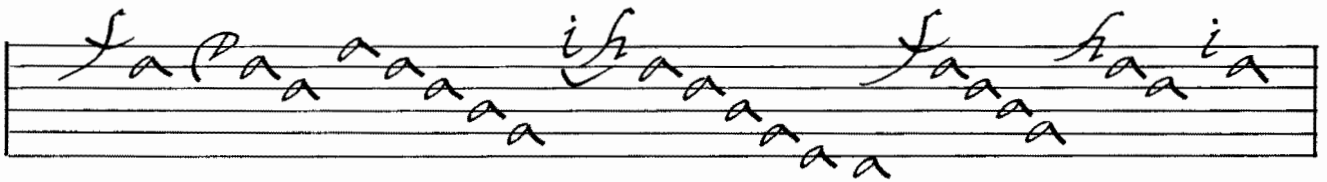
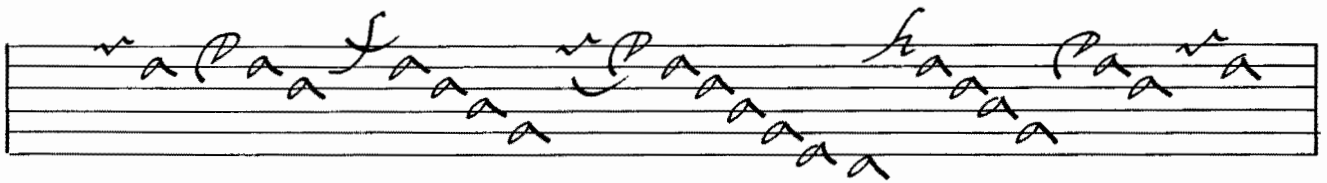
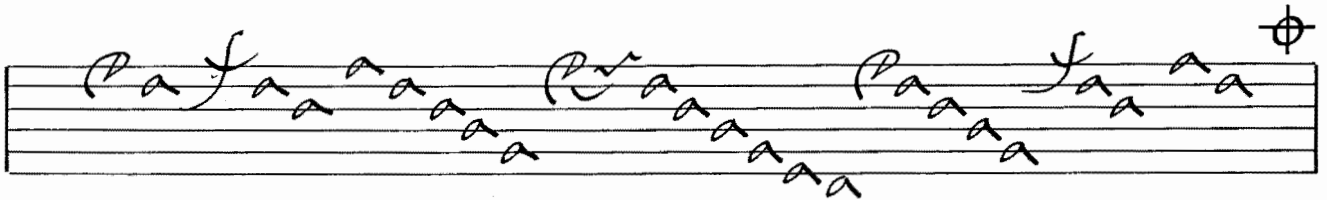
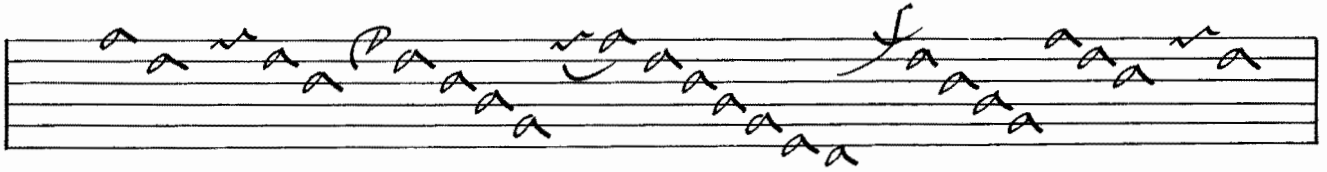
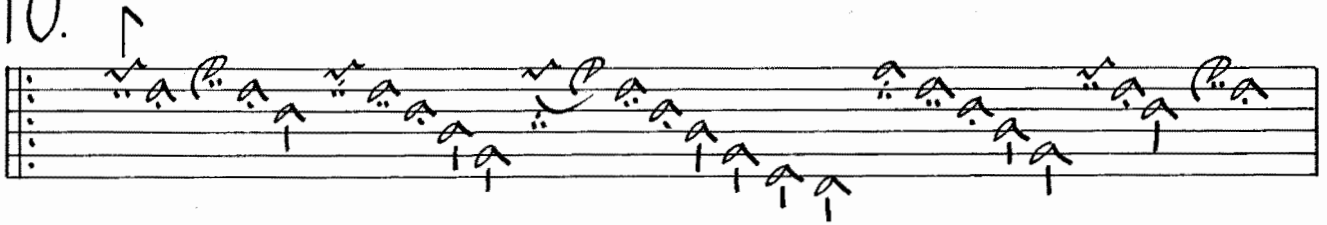
Handwritten musical notation on a five-line staff. The notes are a, b, and natural notes, some with slurs and accents. The sequence is a b, a b, a b, a b, a b, a b, a b, a b, a b, a b, a b. There are also some rhythmic markings below the staff.

Handwritten musical notation on a five-line staff. The notes are a, b, and natural notes, some with slurs and accents. The sequence is a b, a b, a b, a b, a b, a b, a b, a b, a b, a b, a b. There are also some rhythmic markings below the staff.

Handwritten musical notation on a five-line staff. The notes are a, b, and natural notes, some with slurs and accents. The sequence is a b, a b, a b, a b, a b, a b, a b, a b, a b, a b, a b. There are also some rhythmic markings below the staff.

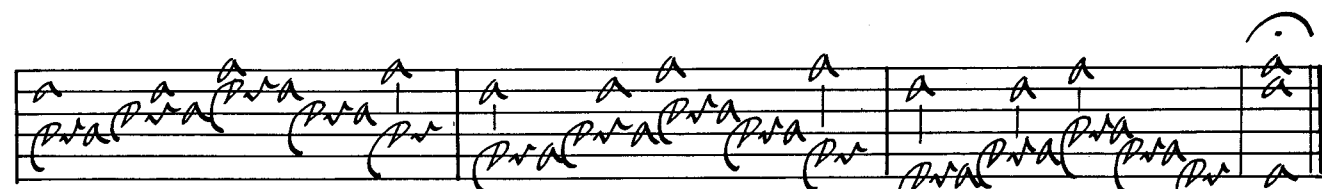
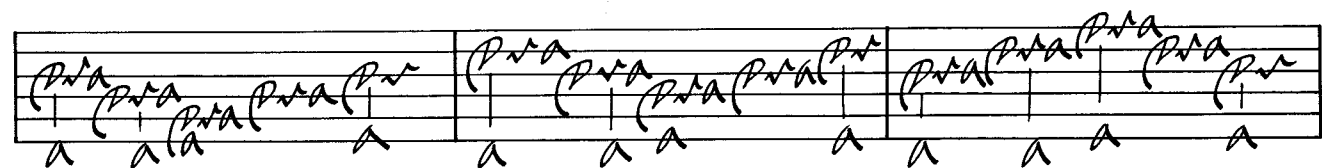
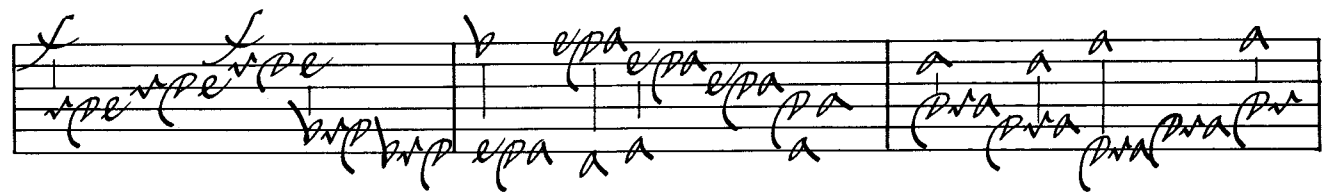
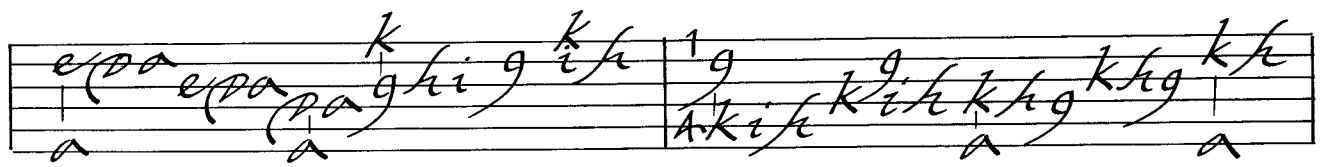
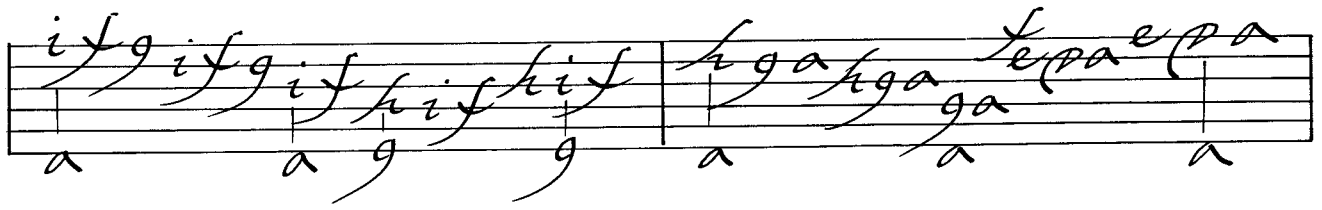
Empty musical notation on a five-line staff.

10.



The order and number of repetitions of the boxes is free.

11. ♯



12.

f ad lib. 13 8 ad lib. 8 5 3 ad lib. 1 ad lib.

2 1 ad lib. 3 2 1 ad lib. 1 1 1 1 1 3 2 ad lib.

1 ad lib. 1 ad lib. 1 2 ad lib. 3 2 1 ad lib.

1 1 1 1 1 3 2 ad lib. 1 ad lib. 2 1 ad lib.

x 3 2 1 ad lib. 1 1 1 1 1 3 2 ad lib. 3 2 1 ad lib.

2 1 ad lib. 3 2 1 ad lib. 1 1 1 1 ad lib. 1 ad lib. 2 1 ad lib.

3 2 1 1 ad lib. 1 ad lib. 5 ad lib. 1 ad lib. 1 ad lib. 2 ad lib.

2 ad lib. 3 ad lib. 5 ad lib. 8 ad lib. 13 ad lib. 13

x example 3 2 1 ad lib.

Greensleeves

New Variations on a Renaissance Favorite

6/8

