

Stefan Olof Lundgren

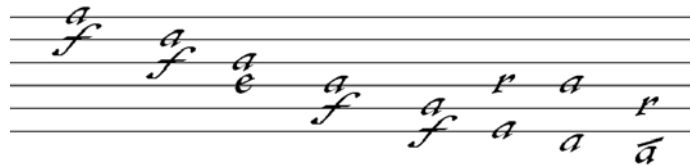
# Wiegenlied

## Op. 32

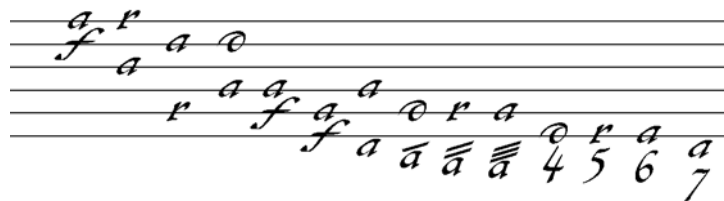
Heinrich Isaac

Arranged for  
Lute in G and Theorbo in A

Accordatura for Lute in G



Accordatura for Theorbo in A



# Wiegenlied

Lute in G

**A**

Heinrich Isaac / Bearb. Stefan Olof Lundgren

♩ = 70

Musical notation for section A, measures 1-8. The score is in 4/4 time. The first system (measures 1-4) shows a treble clef with a 4/4 time signature. The second system (measures 5-8) is marked with a '5' at the beginning. The notation includes rhythmic flags and various note values (quarter, eighth, sixteenth notes) with stems and beams.

Musical notation for section B, measures 9-12. The score is in 4/4 time. The first system (measures 9-10) is marked with a '9' at the beginning. The notation includes rhythmic flags and various note values with stems and beams.

Musical notation for section C, measures 13-16. The score is in 4/4 time. The first system (measures 13-14) is marked with a '13' at the beginning. The notation includes rhythmic flags and various note values with stems and beams.

Musical notation for section C, measures 17-20. The score is in 4/4 time. The first system (measures 17-18) is marked with a '17' at the beginning. The notation includes rhythmic flags and various note values with stems and beams.

Musical notation for section D, measures 21-23. The score is in 4/4 time. The first system (measures 21-22) is marked with a '21' at the beginning. The notation includes rhythmic flags and various note values with stems and beams.

Musical notation for section D, measures 24-27. The score is in 4/4 time. The first system (measures 24-25) is marked with a '24' at the beginning. The notation includes rhythmic flags and various note values with stems and beams.

# Wiegenlied

Theorbo  $\text{♩} = 70$

Heinrich Isaac / Bearb. Stefan Olof Lundgren

Measures 1-2: Theorbo accompaniment in 4/4 time. The right hand plays a rhythmic pattern of eighth notes, while the left hand plays a bass line of quarter notes. The notes are: 1. a, a, a, a, a, a, a, b; 2. a, a, a, a, a, a, a, b.

Measures 3-4: Section A. Measure 3 starts with a treble clef and a repeat sign. The right hand has a triplet of eighth notes (a, a, a) followed by quarter notes (a, a, a, a). The left hand has quarter notes (a, a, a, a). Measure 4 continues with a treble clef and a triplet of eighth notes (f, e, d) followed by quarter notes (c, b, a, a). The left hand has quarter notes (a, a, a, a).

Measures 5-6: Theorbo accompaniment. Measure 5: Right hand (a, b, a, a, a, b, a, a, r, a, a, o, r, r, f, o), Left hand (a, a, a, a, a). Measure 6: Right hand (o, r, a, a, o, a, a, b, b, b, a, o, b, a), Left hand (a, a, a, a, a).

Measures 7-8: Section B. Measure 7: Right hand (o, b, r, r, a, o, a, b, a, b, o, a, o, a), Left hand (a, a, a, a, a). Measure 8: Right hand (b, a, e, o, r, r), Left hand (b, a, b, a).

Measures 9-12: Theorbo accompaniment. Measure 9: Right hand (b, a, b, a, b, a, a, b, a), Left hand (a, a, a, a, a). Measure 10: Right hand (b, o, o, o, o, b, a, a), Left hand (a, a, a, a, a). Measure 11: Right hand (b, a, b, a, a, a, o), Left hand (a, a, a, a, a). Measure 12: Right hand (b, a, b, a, a, a, o), Left hand (a, a, b, o, a).

Measures 13-14: Theorbo accompaniment. Measure 13: Right hand (b, b, o, a, a, o, b, a, a, r, a, a), Left hand (b, a, o, b, a, a, b, a, a). Measure 14: Right hand (a, a, o, b, a, r, a, a), Left hand (a, a, a, a, a).

Measures 15-16: Section C. Measure 15: Right hand (b, o, o, e, e, o, r, o, e, o, o, r, a), Left hand (a, b, b, e, a, e, a, e, a). Measure 16: Right hand (e, o, r, o, e, o, o, r, a), Left hand (e, a, e, a, b, a).

2

16

Staff 1: *e a a a b r a e e a e*

Staff 2: *a b a b a b a e b e b*

17

Staff 1: *e a a a b b a b e a e e r r a b*

Staff 2: *a b e e a a a a a a a a*

18

Staff 1: *a b r e f a a e a b b a a b a*

Staff 2: *a e b e a a a a a a a*

19

Staff 1: *a b e g a a a b e e r b*

Staff 2: *b a a a a a a a r*

20

Staff 1: *b a a b b r a r a a e e b a b*

Staff 2: *a a a a a a a a a a*

21

**D**

Staff 1: *a b e e b a e e b a b a e e*

Staff 2: *a a r b a b a b a b a*

23

Staff 1: *g g g e e e e b a e e b a b a*

Staff 2: *e r b a b a a a e a a b a b a*

25

Staff 1: *b a r b e r b a b a b a e e r b*

Staff 2: *a a a a a a a a a a b*