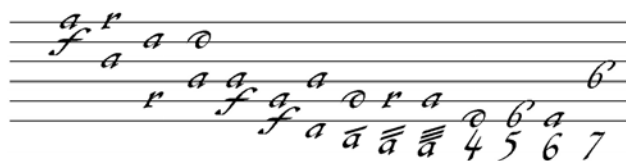


Stefan Olof Lundgren

Mr. John Donne, His Prologue Donna, Her Entrée and Dance Op. 38

Theorbo / Chittarone

Accordatura



48

4 5 6 4 5 6

53

4 5 6 7 4

59

5 6 7 555555 666666 7 555555 666666 7

68

555555 666666 7 a a a a a a 555555 666666 7

76

a a a a a a 555555 666666 555555 665544 a a a a a a a a a a a a

83

a a

87

4 5 6

91

7 4 5 6 7

Donna, Her Entrée

Stefan Olof Lundgren, 2008

♩ = 50

11

5 5 5 5 5 5

11

5 5 5 5 5 5

19

5 5 5 5 5 5

27

5

36

3 3 3 3

45

3 3 3 3

54

4 4

63

3 3 3 3

71

4 5

Donna, Her Dance

Stefan Olof Lundgren, 2008

♩ = 100

17
16

A

B

C

Musical staff with notes and dynamics. The first measure has a dynamic of *f* and the second measure has a dynamic of *f*. The notes are mostly quarter and eighth notes.

To Coda

Musical staff with notes and dynamics. The first measure has a dynamic of *f* and the second measure has a dynamic of *f*. The notes are mostly quarter and eighth notes.

rit. $\text{♩} = 80$

D

Musical staff with notes and dynamics. The first measure has a dynamic of *f* and the second measure has a dynamic of *f*. The notes are mostly quarter and eighth notes.

Musical staff with notes and dynamics. The first measure has a dynamic of *f* and the second measure has a dynamic of *f*. The notes are mostly quarter and eighth notes.

Musical staff with notes and dynamics. The first measure has a dynamic of *f* and the second measure has a dynamic of *f*. The notes are mostly quarter and eighth notes.

accel. $\text{♩} = 100$

E

Musical staff with notes and dynamics. The first measure has a dynamic of *f* and the second measure has a dynamic of *f*. The notes are mostly quarter and eighth notes.

Musical staff with notes and dynamics. The first measure has a dynamic of *f* and the second measure has a dynamic of *f*. The notes are mostly quarter and eighth notes.

Musical staff with notes and dynamics. The first measure has a dynamic of *f* and the second measure has a dynamic of *f*. The notes are mostly quarter and eighth notes.

D.S. al Coda

Musical staff with notes and dynamics. The first measure has a dynamic of *f* and the second measure has a dynamic of *f*. The notes are mostly quarter and eighth notes.

CODA

Musical staff with notes and dynamics. The first measure has a dynamic of *f* and the second measure has a dynamic of *f*. The notes are mostly quarter and eighth notes.